



Donnington Wood Infant School & Nursery

# Newsletter

Friday 13th November 2020

On Thursday Class 1 & 2 enjoyed a 'Clay Day'. They learned to make pinch pots and coil pots. There were some very impressive pots by the end of the day.

Today we have all been taking part in some Children in Need themed activities. Thank you for all your donations.



## Attendance

Whole School— 90.97%

Class 1— 99.19%

Class 2— 92.86%

Class 3— 91.33%

Class 4— 88.89%

Class 5— 89.81%

Class 6— 78.21%

2s Nursery— 60.32%

3s Nursery— 90.22%



Lates - 16



Lost learning =  
2h 33mins

Early Bird - Class 5

### Face coverings

An enormous thank you to everyone who has been wearing a face covering when dropping off or collecting. We are aware that some parents are exempt from wearing masks. Please be aware that you still need to maintain the 2m social distancing even when wearing a face masks.



We have noticed a number of disposable face masks dropped on the school grounds. If you use a disposable face mask there are bins at each entrance to the school site—please dispose of your mask in the bin. Thank you.



## ScholarPack

Cloud based MIS for Primary Schools

The Scholarpack app is for parents to communicate with the school office, change contact details and view attendance. If are not signed up the please contact the school office.



TAPESTRY  
ONLINE LEARNING  
JOURNAL

## Tapestry

In Nursery and Reception the Tapestry app is for parents to be able to view their child's observations and communicate with staff.

For all children (Nursery and everyone in school) the Tapestry app will be used to communicate with parents if part or all of school or nursery is closed.

If you are not signed please let us know so we can sort it as soon as possible.



### Breakfast Club

7:45—8:45

£2 per day

More information  
available in the school office.

### Parking

We have had complaints recently about parking at the start and end of the day.



This week a Telford & Wrekin Parking Enforcement Officer issued fines to a number of parents who were parked on the yellow zigzag lines outside school, The Parking Enforcement Officer informed us that they will be making regular visits to support us with ensuring parents are parking appropriately and legally.

## In Golden Book This Week

Class 1

Tia & Preeya

Class 2

Summer & Elliott

Class 3

Kiah & Rocco

Class 4

Harman & Alex

Class 5

Dimitra & Logan

Class 6

Amelija & Jayden

Nursery

Christian, Kevin &

Adelina

**We must keep on  
protecting each other.**



HANDS



FACE



SPACE

[www.telford.gov.uk/coronavirus](http://www.telford.gov.uk/coronavirus)

## Jigsaw

Next week we are  
looking for people  
who help others



@donnwoodinfants

01952 386640

donnwood.infants@taw.org.uk

[donningtonwoodinfants.co.uk](http://donningtonwoodinfants.co.uk)



Artsmark  
Silver Award  
Awarded by Arts  
Council England

## Starting School September 2021

If you have a child born between  
**1st September 2016 and 31st August 2017**  
you must apply online at [www.telford.gov.uk/](http://www.telford.gov.uk/admissions)  
admissions

There are no paper application forms.

**Even if your child is in our nursery you *must apply online by 15th January 2021***

If you have any questions or do not have access to the internet please talk to the office.

**Parents of children in Year 2 will need to apply for Year 3 (Junior School) using the same online system.**

## PE kit

Children in school need to have a PE Kit with them everyday. It can come to school on Monday and stay all week.  
Black or dark blue shorts, plain white t-shirt, plimsolls / trainers



## Reading at home



New books Monday

Return books Friday

## Punctuality

Doors for nursery are open 8:30-8:45 and 12:15-12:30 each day.

Doors for school are open 8:45-8:55.

Registers in school are taken at 8:55.



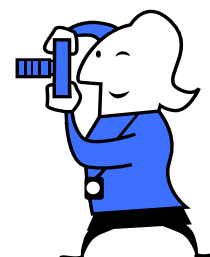
If you arrive and the door is closed you must go to the school office and sign your child in. School staff will take your child to school or nursery.

Please be aware that if your child arrives late and enters school through the office they will potentially be walking through other 'bubbles' of children to reach their classroom.



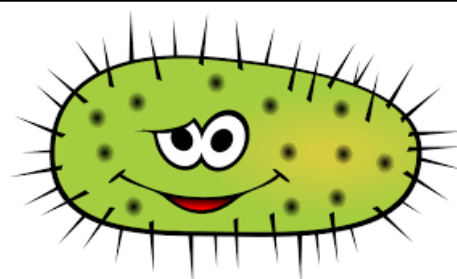
Please make sure your child has a water bottle in school everyday. Juice, pop and fizzy drinks are not allowed

**School Photo orders due back by 30th November**



## Illness

- Act quickly if your child is showing any signs of illness - anyone showing symptoms (high temperature, new persistent cough, loss of taste/smell), adult or child, should not attend school / nursery or come on to the site.
- Anyone (child or member of staff) with symptoms will go home immediately and return following government guidelines
- Please notify the office if your child is absent. You must give us the reason for their absence as we are currently required to report certain symptoms.



## Testing

- If your child or someone in your household has symptoms they will need to be tested and everyone in your house will need to self-isolate.
- **If you have children in more than one school you will need to collect all children straight away.**
- If the test result is negative then you must email the result to us and we will contact you to confirm that your child can return.
- If the test is positive then self-isolation will need to continue for 14 days.

Please make sure you contact the office (386640 or [donnwood.infants@taw.org.uk](mailto:donnwood.infants@taw.org.uk)) if your child is absent from school and nursery. It is vital that we know why children are absent so that we can keep everyone safe. Thank you.