



Donnington Wood Infant School & Nursery

Newsletter

Friday 20th November 2020

It has been another busy week in school and nursery with the children having lots of fun learning. We are doing everything we can to keep things running as normal whilst juggling the impact of self-isolation for children, their families and staff. A big thank you to Nursery 2s parents for their understanding this week with the 2s room closed for 3 days. All of nursery is open again from Monday.

Attendance

Whole School— 89.88
Class 1— 92.40%
Class 2— 90.16%
Class 3— 82.29%
Class 4— 89.56%
Class 5— 98.15%
Class 6— 86.42%
2s Nursery— 80.56%
3s Nursery— 83.52%



Lates - 15

Lost learning =
1h 07mins

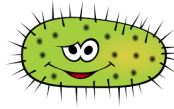
Early Bird - Class 2



Social Distancing

Thank you to everyone for continuing to wear face coverings when dropping off and collecting children. Please walk on the left hand side of any footpaths so that the 2m distance can be maintained at all times.

Please return your child's **Flu Immunisation form** by Wednesday 25th November. You must return it to say if you 'do' or 'do not' want your child to be immunised.

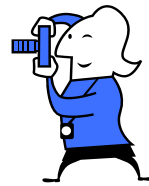


Testing

There is now a **COVID Testing Centre at Donnington Wood Bowling Club on School Road**. Tests need to be booked in the normal way.

We hope this will help families who do not have transport to other testing centres and have previously had to wait for home testing kits. Please continue to let us know if anyone in your house has symptoms or is being tested.

School Photo orders due back by Monday 30th November



Ofsted

We have received a letter from Ofsted following our virtual conversation on 5th November about the return to school. There is a copy of the letter on the school website.

Reading at home



New books Monday
Return books Friday



Breakfast Club

7:45—8:45 £2 per day
More information available in the school office.

- ★ ★ ★ ★ ★ ★ ★ ★ ★ ★ ★ ★ ★ ★ ★ ★
- In Golden Book This Week**
- Class 1
Amelia, Joana & Anisia
- Class 2
Tristin & Emmanuel
- Class 3
Lucas & Alfie
- Class 4
Shayla & Hamish
- Class 5
Mehmed & Brianne
- Class 6
Eloise & Alex
- Nursery
Christian, Nicholas, Ava & Adelina
- ★ ★ ★ ★ ★ ★ ★ ★ ★ ★ ★ ★ ★ ★ ★ ★

Jigsaw

Next week we are looking for people who solve problems

We must keep on protecting each other.



HANDS

FACE

SPACE

www.telford.gov.uk/coronavirus



@donnwoodinfants

01952 386640

donnwood.infants@taw.org.uk

donningtonwoodinfants.co.uk



Artsmark Silver Award
Awarded by Arts Council England

Starting School September 2021

If you have a child born between
1st September 2016 and 31st August 2017
you must apply online at www.telford.gov.uk/admissions

There are no paper application forms.

Even if your child is in our nursery you *must apply online by 15th January 2021*

If you have any questions or do not have access to the internet please talk to the office.

Parents of children in Year 2 will need to apply for Year 3 (Junior School) using the same online system.

PE kit

Children in school need to have a PE Kit with them everyday. It can come to school on Monday and stay all week.

Black or dark blue shorts, plain white t-shirt, plimsolls / trainers



Please make sure your child has a water bottle in school everyday. Juice, pop and fizzy drinks are not allowed



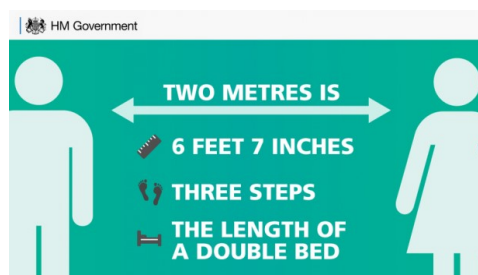
ScholarPack
Cloud based MIS for Primary Schools

The Scholarpack app is for parents to communicate with the school office, change contact details and view attendance. If are not signed up the please contact the school office.

Tapestry

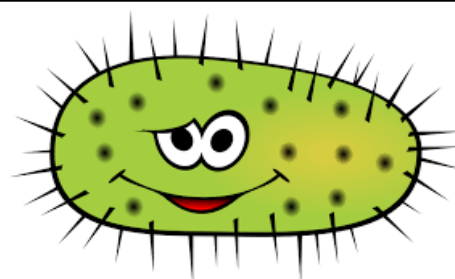
In Nursery and Reception the Tapestry app is for parents to be able to view their child's observations and communicate with staff.

For all children (Nursery and everyone in school) the Tapestry app will be used to communicate with parents if part or all of school or nursery is closed. If you are not signed up please let us know so we can sort it as soon as possible.



Illness

- Act quickly if your child is showing any signs of illness - anyone showing symptoms (high temperature, new persistent cough, loss of taste/smell), adult or child, should not attend school / nursery or come on to the site.
- Anyone (child or member of staff) with symptoms will go home immediately and return following government guidelines
- Please notify the office if your child is absent. You must give us the reason for their absence as we are currently required to report certain symptoms.



Testing

- If your child or someone in your household has symptoms they will need to be tested and everyone in your house will need to self-isolate.
- **If you have children in more than one school you will need to collect all children straight away.**
- If the test result is negative then you must email the result to us and we will contact you to confirm that your child can return.
- If the test is positive then self-isolation will need to continue for 14 days.

Please make sure you contact the office (386640 or donnwood.infants@taw.org.uk) if your child is absent from school and nursery. It is vital that we know why children are absent so that we can keep everyone safe. Thank you.