

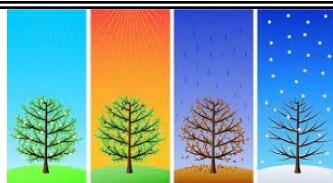


Donnington Wood Infant School & Nursery

Newsletter

Friday 14th May 2021

On Thursday classes 3 & 4 enjoyed a fantastic session led by Judie from Wrekin Forest School. They managed to avoid the rain and were able to learn more about the seasons and the changes we see around us during the year.



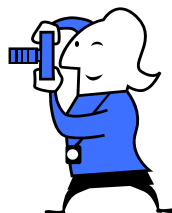
Next Monday will bring some changes to restrictions across England. There will not be any changes to routines or systems in school or nursery at the moment. This means that adults still need to keep 2m social distancing on site and we would encourage you to wear a face covering when dropping off and picking up. Staff will continue to wear face coverings when talking to parents. The children will stay in their year group bubbles as this has been very effective so far at keeping everyone safe.

Supervision

Thank you to parents who have made sure their children are with them on the school site. There been a number of concerns about children running around on the grassed area and car park while parents are waiting to collect from Nursery. We appreciate that the current socially distanced queuing system is tricky but older children **must** remain with parents at all time. If you have older children and they are finding waiting calmly in the queue challenging then please consider waiting to join the queue until it is shorter.



Photo orders must be returned by 9am Monday 17th May



PSHE Policy

If you would like to read and comment on the draft PSHE policy (Personal, Social and Health Education, including Relationships and Sex Education) please contact the school office and they will forward you a copy. Any comments need to be returned by 28th May.

Testing

The twice-weekly test kits in Telford & Wrekin (for people feeling well, with no coronavirus symptoms) can be accessed from any testing site (the nearest is Donnington Wood Bowling Club, School Road, Donnington, Telford, TF2 8HU.



Anyone with main or precautionary coronavirus symptoms is advised to book a test immediately at one of the borough's NHS 'Test and trace' sites.



Breakfast Club

7:45—8:45
£2 per day

More information available from the office. **Please come to the hall door for Breakfast Club.**

Attendance

Whole School— 95.90%
Class 1— 94.84%
Class 2— 94.40%
Class 3— 89.85%
Class 4— 99.44%
Class 5— 96.91%
Class 6— 100%
2s Nursery— 79.68%
3s Nursery— 81.91%



Lates - 20



Lost learning = 5hr 54mins

Early Bird - Class 5

- ★ ★ ★ ★ ★ ★ ★ ★ ★ ★ ★ ★ ★ ★ ★ ★
- ★ **In Golden Book** ★
- ★ **This Week** ★
- ★ Class 1 ★
- ★ Maja & Evan-Luke ★
- ★ Class 2 ★
- ★ Whole class ★
- ★ Class 3 ★
- ★ Whole Class ★
- ★ Class 4 ★
- ★ Whole Class ★
- ★ Class 5 ★
- ★ Sorin & Kai ★
- ★ Class 6 ★
- ★ Jayden & Adam ★
- ★ Nursery ★
- ★ Alivia, Jaxon, Chloe & ★
- ★ Jalen-Shane ★
- ★ ★ ★ ★ ★ ★ ★ ★ ★ ★ ★ ★ ★ ★ ★ ★

Jigsaw

Next week we are looking for people who know how to help themselves and others when they are upset.



@donnwoodinfants

01952 386640

donnwood.infants@taw.org.uk

donningtonwoodinfants.co.uk



Water Bottles

Please make sure your child has a water bottle in school everyday. If your child has a different drink for lunchtime then please put this in their lunch box. Water is available for all children in the hall at lunchtime.



Parking

To help keep pupils and parents safe on the school site we request that you do not drive onto the school site at the start or end of the day or nursery session. Please do not park in the Children's Centre car park.

Disabled parking spaces are available in the car park by the Nursery entrance and the Children's Centre car park. If you need to use one of these spaces please talk to the school office to request a permit and make sure you also display a valid blue badge.

PE in school

Children in school must wear school uniform everyday and have their PE kit in school all week.

Reception

PE on Monday & Friday
Year 1

PE on Wednesday & Friday
Year 2

PE on Tuesday & Friday

GETTING A COVID-19 TEST in Telford and Wrekin



You MUST get a test if:

You have at least **one** of the three main symptoms.



High temperature



New persistent cough



Loss of taste or smell

ISOLATE as soon as symptoms show, while waiting for test results and if you test positive.

You **CAN** get a test for these precautionary symptoms:



Headaches



Aches and pains



Feeling very tired for no good reason



Sore throat



Runny nose



Sneezing



Tummy ache in children

You **DO NOT NEED TO ISOLATE** if you have **only one or more of these precautionary symptoms**, or while waiting for test results for these precautionary symptoms.

You only need to isolate if you test positive or have at least one of the three main symptoms.

Book a test at nhs.uk/coronavirus

For precautionary symptoms testing select:

'My local council or health protection team has asked me (or someone I live with) to get a test, even though I do not have symptoms.'