



Donnington Wood Infant School & Nursery

Newsletter

Friday 19th January 2024

On Tuesday this week Classes 5 & 6 (Reception) enjoyed a visit from the police as part of their 'People Who Help Us' theme this half term. They really enjoyed exploring the police car (and siren!) and finding out about the many aspects of the police.

Please let us know if you change your phone number or move house so that we have up to date contact details. Thank you.

We are sending the newsletter out as a printed copy to everyone this week as a reminder that it is emailed every Friday in term time. You can also find the newsletter on the website using this QR code.



Places available for September

Donnington Wood Infant School & Nursery

Last few places available for after Easter

15 hour Nursery places available for working parents of 2 year olds (from Easter 2024)

Please contact us for more information.

donnwood.infants@taw.org.uk
01952 386640

Punctuality

We have had lots of children late this week. Please make every effort to bring your child on time every day so they do not miss out on learning.

Doors for nursery are open 8:30-8:45 and 12:15-12:30

Doors for school are open 8:40-8:45.

Registers in school are taken at 8:45.

If you arrive late you must go to the school office and school staff will take your child to class.



PE in school

Children in school must wear school uniform everyday and have their PE kit in school all week. PE is a requirement of the EYFS and National Curriculum.

Reception PE — Monday & Friday

Year 1 PE — Wednesday & Friday

Year 2 PE — Tuesday & Friday

PE Kit—plain white t-shirt, navy / black shorts, trainers /

Breakfast Club

7:45—8:40

£2 per day

More information from the office.

Please come to the main front door for Breakfast Club.



Attendance

Whole School— 90.67%

Class 1— 83.81%

Class 2— 96.63%

Class 3— 96.32%

Class 4— 94.80%

Class 5— 96.53%

Class 6— 74.15%



Lates = 41

Lost Learning = 5 hrs 35 minutes

Early Bird = Class 6

In the Golden Book this week

Class 1

Soliman & AJ

Class 2

Harper & Waris

Class 3

Chloe & Ava

Class 4

Ariah & Alivia

Class 5

Godwin & Layla

Class 6

Isla & Amitoj

Nursery

Evie & Miah

Next week's word....

earth

Jigsaw

Next week we are looking for people work well with a partner or group

Measles

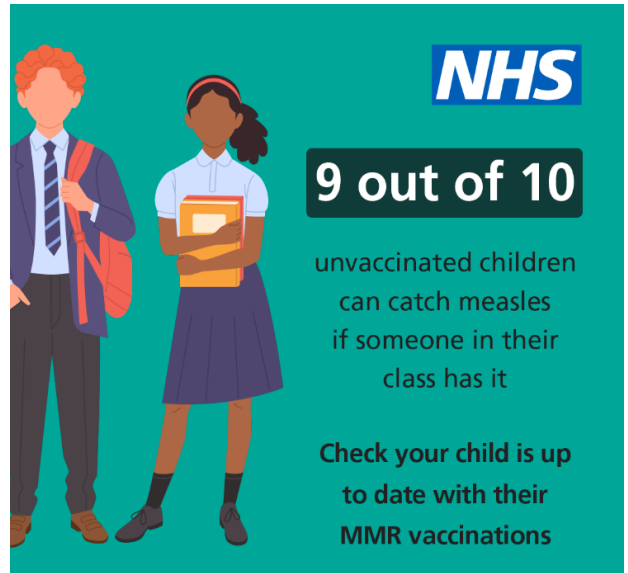
Cases of measles are increasing in the UK, including in the West Midlands, and it's likely that there will be cases in Telford in the near future.

Measles is a viral illness that can be serious and sometimes fatal. Spending 15 minutes with someone with measles is enough to get the virus. Symptoms of measles include high fever, runny nose, cough, red and watery eyes, small red spots with a bluish-white centre inside the mouth. A rash can appear later, usually on the face, upper neck, hands and feet, fading after 5 to 6 days. If you've not been vaccinated against measles you can be at risk, but it's most common in young children. Someone with measles can spread the virus up to 4 days before a rash appears, and up to 4 days after.

Measles can have serious and sometimes fatal consequences, so make sure you and your children are up to date with MMR vaccinations, and ask your GP about catch-up jabs if needed. The MMR vaccine is highly effective at protecting against measles.

If you are unsure if your child is up to date with all their routine vaccinations you can check their Red Book (personal child health record) in the first instance. If you are still not sure, or if you need to bring your child up to date with their vaccines, you should contact their GP practice to check and book an appointment.

If you are concerned that your child has measles, please call your GP in the first instance, to reduce the risk of passing the disease to others in the waiting room. More information on measles can be found [here](#) and information on the MMR vaccine can be found [here](#).



PE in school

Children in school must wear school uniform everyday and have their PE kit in school all week.

Reception PE — Monday & Friday

Year 1 PE — Wednesday & Friday

Year 2 PE — Tuesday & Friday

PE Kit—plain white t-shirt, navy / black shorts, trainers / plimsolls



Reading at home

We know that regular reading to an adult can support children to make fantastic progress with learning to read, and becoming fluent readers. Please encourage your child to read regularly at home so they can collect their prizes in school. We expect children to read at home at least 3 times per week. If you have any questions about reading at home then please talk to your child's teacher or contact the office who will pass a message to your child's teacher.

Need help with housing, fuel costs, landlords or the cost of living?

Telford & Wrekin Council offer lots of support for residents. You can find links to helpful information on our website on the 'Early Help' page in the 'Parents' section.



Cost of living support
#on your side

Parking

To help keep pupils and parents safe on the school site we request that you **do not drive onto the school site at the start or end of the day or nursery session.**



Please do not park in the Children's Centre car park.

Disabled parking spaces are available in the car park by the Nursery entrance and the Children's Centre car park. If you need to use one of these spaces please talk to the school office to request a permit and make sure you also display a valid blue badge.

The yellow zig-zag markings at all 3 entrances are designed to keep everyone safe. **Please do not park on the yellow zigzags.**